

13145 S. Blackbob Road • Olathe, KS 66062 • 913-780-6023 • [www.bsicks.org](http://www.bsicks.org)

*Connecting people to Jesus as we gather, grow, and go.*

## PARISH ANNOUNCEMENTS



### LENTEN DINNERS

Join us for Lenten dinners! 5:30-6:30pm

Mar 30- Mac and cheese

April 6- Pulled pork sliders

And join us for the Seder meal on April 12 at 6:30pm!

### HEALTH MINISTRY

Health Ministry Committee's mission is to promote congregational wellness of mind, body, and spirit at BSLC by helping care for one another to attain, maintain and / or regain the best possible whole person health (wellness of mind, body, and spirit) that can be experienced. Area's we serve:

- ❖ Circle of Hope Cancer support group
- ❖ Facility Safety and First Aid care
- ❖ Brochure Stand for supportive handouts
- ❖ Baby burp blankets to new preschool babies and at baptisms
- ❖ Health education, referrals, and follow up care after hospitalization

Future plans are coming! Stop by our blood pressure table for more information.

### EVANGELISM AND MISSION

Supported the Following in 2021

- Adopt-A-Student – LCMS Seminary
- Advice and Aid
- Alaska Mission for Christ
- Christmas gift for BSLC Seminary Students

- KS District -Scholarship & Education Loan Repayment Grant
- LCMS World Relief and Human Care
- LLL
- LUMA
- Lutherans for Life
- Lutheran High School of KC
- Lutheran Hour
- Mission Southside
- New Hope Pantry
- Olathe Catholic Charities
- Olathe Salvation Army

### Current Evangelism and Mission Projects

- Vacation Bible School (Contact Kara Herrs or Kerri Schlef)
- Fieldstone Apartment Complex (Contact Juan Martinez or Vicar Roll)
- Guatemala (Contact Pastor Ada)
- Greeters and Ambassadors (Contact Tom Bremer or Trenton Travis)

### SEEKING NOMINEES FOR COUNCIL AND BOARDS

Over 55 people have agreed to serve as an officer or on a board – God is good – all the time. More good news, we have a few board openings if you would like to serve on Evangelism, Youth or Fellowship boards. For more information or to express an interest in serving, please contact one of the Nominating Committee members: Ron Aerni, Adam Holste, Paul Peterson or Kerri Schlef or speak with George Ledgerwood, Pastor Ada, or Pastor Schultz.

### VBS – SAVE THE DATE JUNE 13<sup>TH</sup>-16<sup>TH</sup>



## THIS WEEK IN SUNDAY SCHOOL

The Bible lesson for this week is "Standing Trial." Jesus faces a farce of a trial before the high priest and the Council. Despite a parade of accusers, no two witnesses can manage to make their testimonies agree. Frustrated, the high priest asks, "Are you the Christ?" (Mark 14:61). Jesus' response, "I am" (v. 62), enrages the high priest, who tears his clothing. Meanwhile, Peter faces his challengers in the courtyard. When bystanders accuse Peter of being a follower of the Nazarene, he denies Jesus three times, just as was foretold.

## WORSHIP RESOURCES

### Lectionary Images for March 27<sup>th</sup>

[https://www.bslcks.org/wp-content/uploads/2022/03/2022-03-27\\_lectionary-images.pdf](https://www.bslcks.org/wp-content/uploads/2022/03/2022-03-27_lectionary-images.pdf)

### Children's Worship Notes March 20<sup>th</sup>

[https://www.bslcks.org/wp-content/uploads/2022/03/2022-03-27\\_childrens-worship-notes.pdf](https://www.bslcks.org/wp-content/uploads/2022/03/2022-03-27_childrens-worship-notes.pdf)

## WOMEN'S MINISTRIES

### LWML KANSAS DISTRICT CONVENTION – WE ARE HOSTS!

This year, the district convention which will be held at the DoubleTree Hotel in Overland Park, April 22-24. The Friday night Opening Worship Service with Holy Communion will be hosted by/at Beautiful Savior. It is open to all, and we will appreciate volunteer greeters, parking lot attendants, etc. The convention schedule, registration form, speaker information, bios of officer/pastoral counselor nominees (including Christy McCombs), and other information is available in the [Convention Issue of the Kansas Sonshine newsletter](#). The early registration deadline is March 17. We would love for Beautiful Savior to be well represented at the convention – and would also appreciate you taking a shift at the registration table, as a hospitality volunteers, in the Prayer Room, etc. **If you are interested, please contact Eden Keefe with your preference.**



## LWML GIFTS OF LOVE



### Returning God's Blessings

God has given us so many blessings and we, as Lutheran Women in Mission, love to serve Him by sharing our earthly time and talents. God also wants us to plan how to distribute our earthly blessings when He takes us home to Himself in heaven. You have an opportunity at the upcoming LWML Kansas District Convention to meet and hear Carol von Soosten, our LWML Gift Planning Counselor. If you would like to research more about LWML Gifts of Love, please visit the <https://www.lwmlgiftplan.org/> website. While there, you can sign up for a FREE weekly newsletter with lots of planning, finance, tax, and health tips. This valuable, confidential gift planning service comes at no cost to LWML members and their families.

## MISSIONS

### TOWELS/WASHCLOTHS FOR HYGEINE KITS

Watch for the **TOWEL TOWER** in the narthex. We will be collecting light-weight, dark-colored, regular-sized bath towels (no oversized) and washcloths in March and April. The kits will be given to Orphan Grain Train to be distributed to those in need. Our goal is 50 kits. If you would like to donate but don't want to shop, envelopes will be available for cash donations. Envelopes can be put in the small, locked, wooden donation box on top of the large wooden box. Questions, contact Charlotte Hundley.

### PIONEER TRAIL BACKSNACK PROGRAM UPDATE:

Beautiful Savior is continuing to support the 45 students who are signed up for the program this 2021-22 school year. Our contributions are some of the items that are given to the students to help provide nutritional food for over the weekend. Each month we need to provide these food items for each of the 45 students:

**2 boxes of cereal** (size that will fit in backpack)

**1 box of Breakfast Bars** (any size box with at least a 4 count any type of granola bars.

**1-4-pack fruit cups** (any larger count is fine)

## PRESCHOOL NEWS

Preschool and MDO classes resumed on Tuesday, March 22<sup>nd</sup>, following Spring Break. The children were excited to gather with their friends again to learn and grow in Jesus at BSLP! In chapel, we started our Holy Week stories by sharing the story of Jesus riding into Jerusalem. The children said "Hosanna!" while pastor and vicar told them about the crowd waving their palm branches to welcome Jesus. They learned that Hosanna means save us now! We're still enjoying our March themes and looking forward to more springtime weather soon.

## STEWARDSHIP

**AS WE PROVIDE FOR THE NEEDS OF OTHERS, GOD'S LOVE IS SEEN IN AND THROUGH US.**



"Truly, I say to you, as you did it to one of the least of these My brothers, you did it to Me" (Matthew 25:40).

### STEWARDSHIP CORNER

Knowing that God has graciously given us our physical and spiritual lives, we seek to show our gratitude in how we live and what we do with our lives. An important way we show our thanksgiving to Him is through giving. Giving expresses our love and gratitude to God. Giving to others and to extend God's Church is evidence of God's grace in our lives. Giving is a fruit of grace. Without God's grace, we are not able to give up our resources generously. To unbelievers, giving is foolish and unnecessary. In contrast, believers are empowered by the working of the Holy Spirit to give willingly to all people especially fellow believers who need support (Galatians 6:10).

# March 27<sup>th</sup>



**Visitors and Members -  
please register your  
attendance.**

Our Worship for 03-20-22	
8:00am	176
10:45am	134
6:00pm	18
Online	70
<b>Total</b>	<b>398</b>
<b>Offerings</b>	<b>\$14,780</b>
<b>Sunday School Attendance (in person)</b>	<b>110</b>
<b>Children</b>	<b>92</b>
<b>Trusting Hearts</b>	<b>\$1,700</b>
<i>Offerings do not include any Electronic Contributions</i>	
Our Worship for 03-13-22	
8:00am	149
10:45am	133
6:00pm	16
Online	69
<b>Total</b>	<b>298</b>
<b>Offerings</b>	<b>\$12,826</b>
<b>Sunday School Offering</b>	<b>\$100</b>
<b>Sunday School Attendance (in person)</b>	<b>100</b>
<b>Children</b>	<b>55</b>
<b>Trusting Hearts</b>	<b>\$4,675</b>
<i>Offerings do not include any Electronic Contributions</i>	

## CALENDAR THIS WEEK

### Sunday, March 27<sup>th</sup>

8:00am – Worship w/ Comm. & live streamed  
9:30am – Education Hour & Live streamed  
10:45am – Worship w/Communion  
1:00pm – Music Prep  
3:00pm – Laudate Ringers until 3:45pm  
4:00pm – Youth Choir until 4:45pm  
5:00pm – Beata Handbells until 5:45pm  
6:00pm – Evening worship w/Communion (masks)

### Monday, March 28<sup>th</sup>

8:15am – Preschool  
8:45am – Beautiful Moms in Christ  
12:15pm – Preschool  
6:00pm – Saving Grace Practice

### Tuesday, March 29<sup>th</sup>

8:15am - Preschool  
9:00am – Organist Practice  
12:15pm - Preschool

### Wednesday, March 30<sup>th</sup>

6:30am – Men's Bible Study until 7:30am  
8:15am - Preschool  
9:00am – Organist Practice  
12:00pm – Mid-week Lenten Service  
12:15pm - Preschool  
5:00pm – Chimes Choir until 5:30pm  
5:30pm – Lenten Dinner  
6:00pm – Confirmation until 6:45pm  
6:00pm – Pre-Confirmation until 6:45pm  
6:00pm – Adult Handbells until 6:45pm  
7:00pm – Mid-week Lenten Service  
7:45pm – Adult Choir until 8:30pm

### Thursday, March 31<sup>st</sup>

8:15am - Preschool  
12:15pm – Preschool  
7:00pm – Women's Bible Study

### Friday, April 1<sup>st</sup>

7:30am – Classical Conversations until 4:00pm  
8:15am – Preschool  
12:15pm - Preschool

### Saturday, April 2<sup>nd</sup>

8:30am – Altar Guild Prep until 9:30am  
1:00pm – Easter Bells until 2:00pm

### Sunday, April 3<sup>rd</sup>

8:00am – Worship w/ Comm. & live streamed  
9:30am – Education Hour & Live streamed  
10:45am – Worship w/Communion

1:00pm – Music Prep

3:00pm – Laudate Ringers until 3:45pm

4:00pm – Youth Choir until 4:45pm

5:00pm – Beata Handbells until 5:45pm

6:00pm – Evening worship w/Communion (masks)

### Birthdays:

Mar. 27 Tara Wolff

Mar. 28 Susan Chapa, Daniel Thompson & Chris Martin

Mar. 29 Emily Freese & Kate Stoll

Mar. 30 Lynzee Jeter, Anne Marston, Joanne Hanson & Aunica McMullen

Apr. 1 – Janette Copeland, Eric Herrs, Kendall Herrs, Zachary Hodge & Troy Schepmann

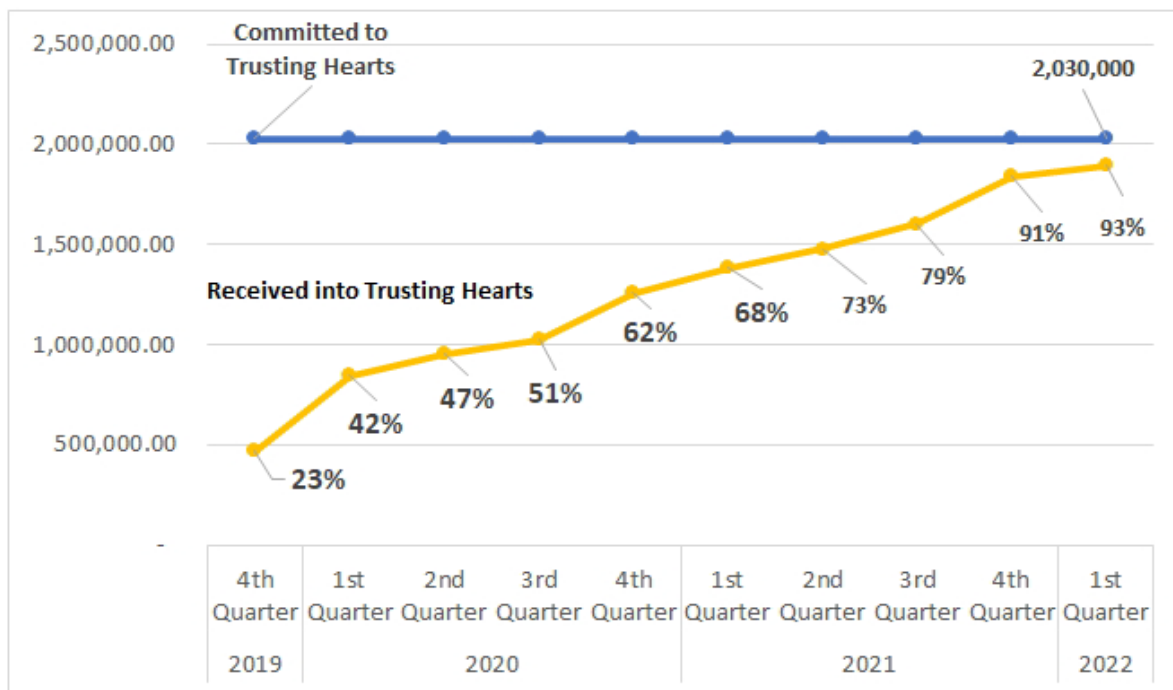
### Anniversaries

Mar. 31 Robert & Janette Copeland 15 years



## Trusting Hearts Capital Campaign - Phase 1

		Quarterly Received	Total Received	Committed to Trusting Hearts	LCEF Loan Amount
<b>2019</b>	4th Quarter	471,606.03	471,606.03	2,030,000	4,219,730
	1st Quarter	375,381.13	846,987.16	2,030,000	4,219,730
<b>2020</b>	2nd Quarter	107,847.91	954,835.07	2,030,000	4,219,730
	3rd Quarter	72,087.43	1,026,922.50	2,030,000	4,219,730
	4th Quarter	229,609.50	1,256,532.00	2,030,000	4,219,730
	1st Quarter	124,976.67	1,381,508.67	2,030,000	4,219,730
<b>2021</b>	2nd Quarter	94,948.35	1,476,457.02	2,030,000	4,219,730
	3rd Quarter	126,956.25	1,603,413.27	2,030,000	4,219,730
	4th Quarter	237,121.09	1,840,534.36	2,030,000	4,219,730
	1st Quarter	50,879.22	1,891,413.58	2,030,000	4,219,730
<b>2022</b>	1st Quarter	50,879.22	1,891,413.58	2,030,000	4,219,730
<b>Project Funding Summary</b>					
LCEF Projected Loan = \$4,219,730					
Raised Through BSLC Trusting Hearts = \$2,030,000					





Trash and Recycling Dumpsters Relocated



# New Building Update



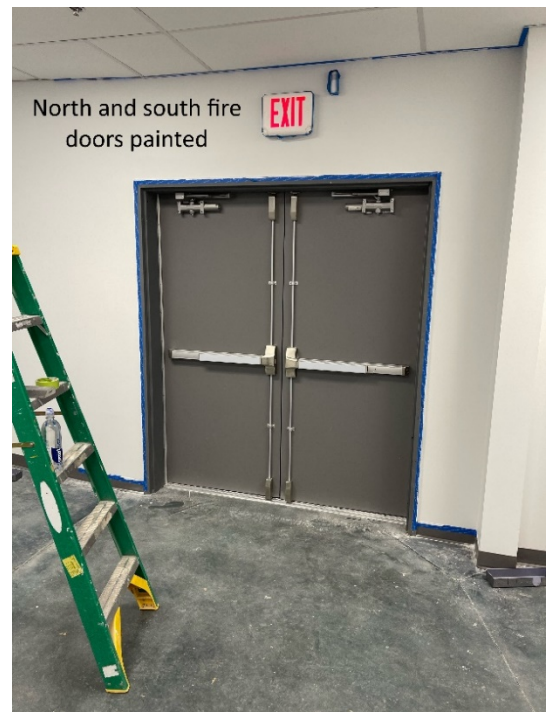
Repair completed



Scrap metal recycled  
\$700 for the youth!



Door frames fixed



North and south fire  
doors painted