

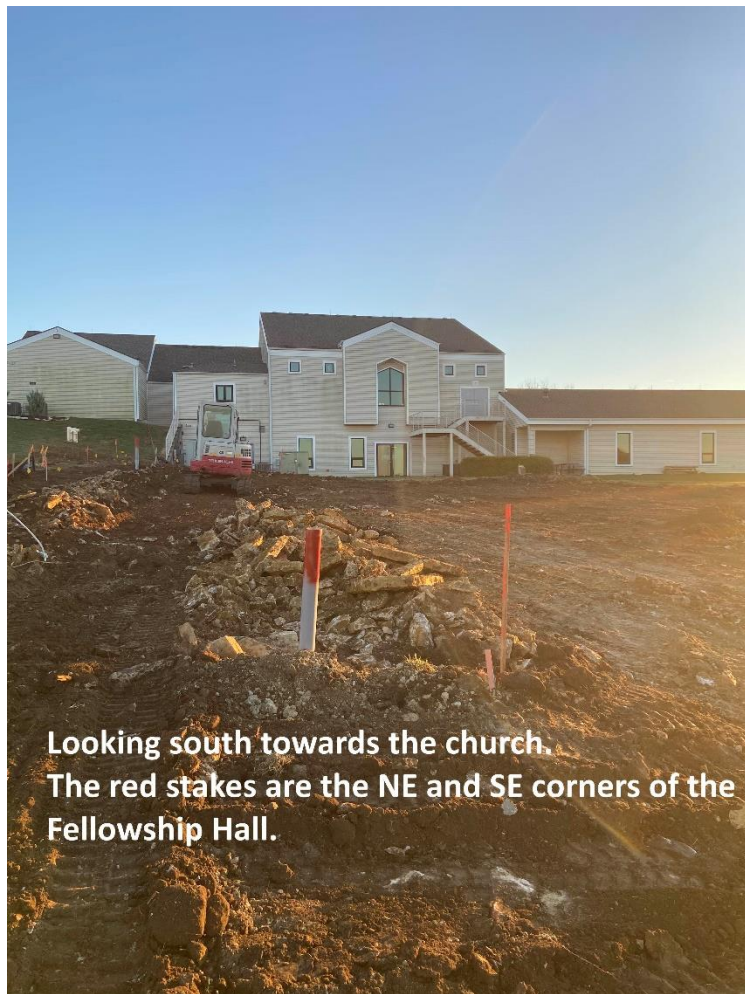
13145 S. Blackbob Road • Olathe, KS 66062 • 913-780-6023 • www.bslcks.org
Connecting people to Jesus as we gather, grow, and go.



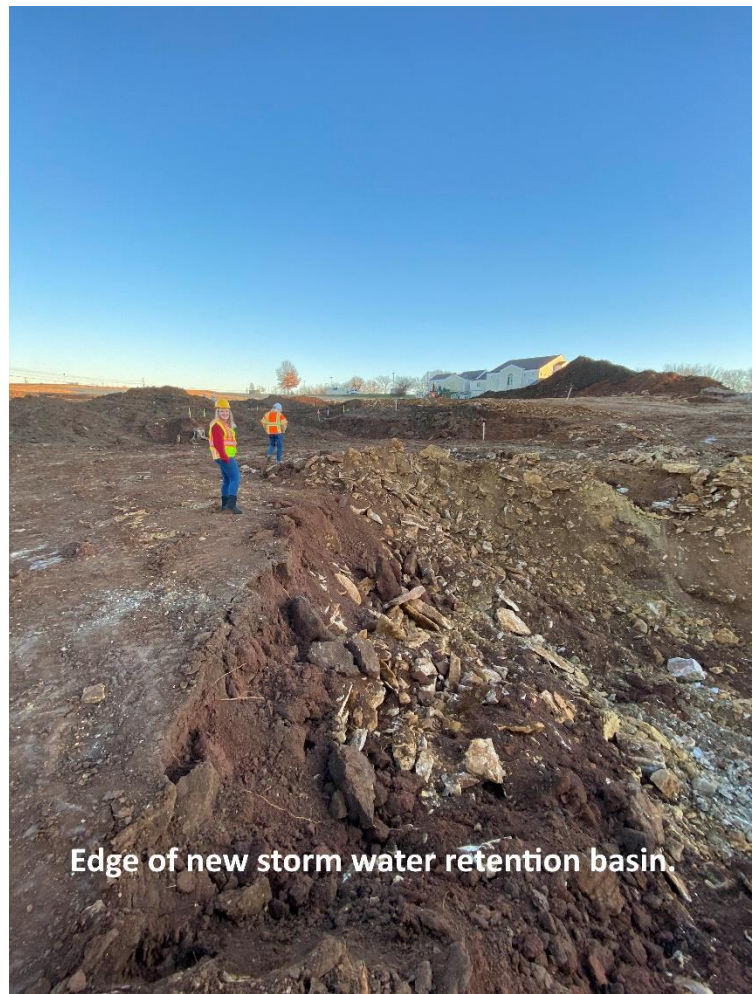
Looking south towards the church.
The red stakes are the NE and SE corners of the Fellowship Hall.



Electrical conduits at location of new electrical transformer.



Looking south towards the church.
The red stakes are the NE and SE corners of the Fellowship Hall.



Edge of new storm water retention basin.

PARISH ANNOUNCEMENTS

MERRY CHRISTMAS FOR THE BSLC STAFF! For those who would like to acknowledge our staff this Christmas, the Board of Elders is collecting monetary gifts to be distributed just before Christmas. If you are able to give, please place your gift in the decorated box located in the narthex during live services or in the box on the table during parking lot communion. If you are not able to make it to church, you can use the Give+ app and select "BSLC Staff Christmas Gift". You can also use Venmo (@BSLC-StaffGift) or mail a check to the church with Attn: John Blakley. If using a check, please write "Staff Gift" in the memo section. Gifts will be collected through the end of the 11:00 am service on Sunday, December 20th. If there are any questions, please reach out to Eric Olson (Chair, Board of Elders) at 913-523-6290. Thank you for your loving generosity!

ADVENT DEVOTIONS from Lutheran Hour Ministries are available in the narthex. Have them delivered right to your inbox, podcast the audio devotional, access them on your mobile device through the FREE app, or listen with Spotify, iHeart Radio, Alexa, or Google Home. Perfect for personal reflection or to share with family, friends and congregations, these seasonal meditations will help prepare you to celebrate the true meaning of these seasons.

POINSETTA SIGN-UP There is a sign-up sheet posted in the narthex on the wall by the Altar Guild room if you attend in person. Or you can give the office a call to get your name on the list. Cost of the poinsettias are \$15.00. Use the green envelope in the narthex or mail your check to the church. Write poinsettia on the memo line.

AMAZON SMILES You can make an impact while you shop for Black Friday and Christmas shopping. Simply

shop at smile.amazon.com/ch/48-1101724 and AmazonSmile will donate .5% of your purchases back to BSLC at no cost to you. The last check we received for the last 3 months was \$183.56!

WORSHIP RESOURCES

Lectionary Images for Dec. 13.

https://www.bslcks.org/wp-content/uploads/2020/12/Dec-13_Lectionary-Images-1.pdf

Children's Worship Notes Dec. 13

https://www.bslcks.org/wp-content/uploads/2020/12/Dec-13_Children-Worship-Notes.pdf

THIS WEEK IN SUNDAY SCHOOL In today's lesson, we learn about how God provides "Food from Heaven." The Israelites arrive in the wilderness with no food, grumbling against Moses and Aaron. God keeps His promise to provide for His people as He daily sends Manna (bread) and quail (meat) from heaven for them to gather. The Lord teaches His people to trust as they gather only what they need for one day.

WOMEN'S THURSDAY EVENING BIBLE STUDY are doing a study entitled "Called – A Nurturing Your Faith Study" by Dr. Michael Zeigler. If you are interested in joining this group please contact Lisa Gruhn ([church directory](#)).

FACE MASKS REQUIRED In light of the rising number of COVID cases and the [Governor's Executive order \(20-52\)](#) requiring face-masks and other coverings while in public regardless of social distancing, the Board of Elders (with support from the pastors) voted on and approved the requirement that face masks or other face coverings must be worn during the entirety of in-person worship services and Bible study at BSLC until the Governor's Executive order is lifted.

WOMEN'S MINISTRIES

MITE BOXES 'Tis the season of Advent so our LWML Mite Boxes have been transformed into Advent Wreaths! Each Advent wreath has candle "containers" for your monetary donations in support of the mission and work of LWML - Lutheran Women in Mission. If you are not at church in the next couple of weeks, you

are welcome to send a check to LWML c/o Beautiful Savior Lutheran Church 13145 S. Blackbob Rd. Olathe, KS 66062 or use the GivePlus app. Secure online donations can also be made through a link on the LWML Kansas District website <https://www.kansaslwml.org/giving.html>. Thanks to Alison Willey and Christy McCombs for their creative talents!



We send 100% of money donated for mite offerings to the Kansas District LWML and they keep 75% for our district mission grants, financial aid for church-work students, and the work of the district and send 25% to national LWML for their selected mission grants, leader training, and their work program. To learn more about current district mission projects click here: <https://www.kansaslwml.org/gospel-outreach.html>. To track national LWML mission grant giving, click here: https://unite-production.s3.amazonaws.com/tenants/lwml/attachments/275279/2020-12-01_2019-2021-Mission-Grant-Distribution-Flyer.pdf.

ADVENT BY CANDLELIGHT Thanks to those who participated in our virtual Advent By Candlelight devotion last Sunday evening, and to Christy McCombs, Eden Keefe, Pam Wellons, Alison Willey, and Sara Zarnstorff for reading.

LWML Our January focus/mission collection will be for the seven Olathe high school students in the ReStart Adopt-A-Youth Foster House. We will receive items or monetary donations to purchase items to make Valentine's Day for these 18-20 year old students a little more special, such as: Target, Walmart, and QuikTrip gift cards, restaurant gift cards (McDonalds and Chick-fil-A are popular choices), hot chocolate packets, gloves, socks, microwave popcorn, chips, snacks, candy. (Currently only one has food allergies to dairy, eggs, wheat.) The January LWML Zoom meeting will be held Monday, January 18 at 6:30 pm.

PRESCHOOL NEWS

*Connecting children and families to Jesus
as we gather, grow, and go.*

Preschool children are busy this week hearing about the story of Jesus and everything that led up to his birth in Bethlehem. Holiday projects are being made by the children and Christmas music fills the hallways as the children are working on their songs for our video Christmas Program this year. We're looking forward to more dress up Spirit Days this month and lots of opportunities to enjoy our Christmas themes.

MISSIONS

PIONEER TRAIL BACKSNACK REMINDER

There are approximately 35 students participating in the Pioneer Trail Backsnack program this school year. Our donations provide a portion of the items that they take home on the weekends. The monthly need for each student is: 2 boxes CEREAL (12-15oz size fits in a backpack), 4 cans HEARTY SOUP (approx. 18-19oz size), 4 FRUIT CUPS. Please consider sponsoring a student and providing these items each month. Donations can be put in the large wooden box in the narthex. Thank you for your generosity.

MLM CHRISTMAS STORE is in need of small kitchen appliances, jeans (all sizes) and queen size blankets. If you can donate money, or order via Amazon wish list before Thanksgiving, it would be appreciated.

<https://www.mlmkc.org/donate-christmas-store.html>

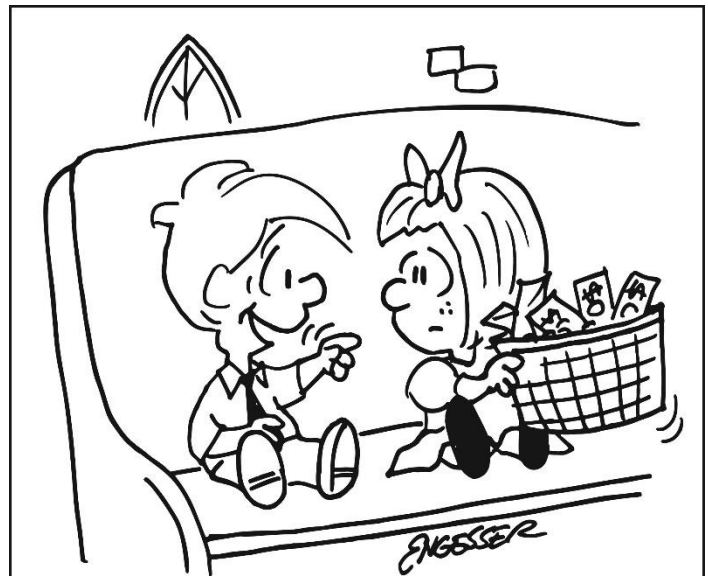
CHRISTMAS FOOD BASKETS THANK YOU

Thank you to all who donated to the Christmas Food Baskets for the Jesus El Buen Pastor Lutheran food pantry in Kansas City. Through the donations of food from our preschool children and the congregation, a Thrivent Action Team project and monetary donations, we were able to deliver over 1400 pounds of sugar, flour and cooking oil to add to their Christmas Baskets. These baskets will provide a more joyous celebration for families during the Christmas season. Thank you very much.

BSLC FUNNIES



"Because he works from home. That's why we never see God in person."



"I put in a jelly bean for pastor."

CALENDAR:

Sunday, December 13

8:00am - Worship w/ Comm. & live streamed
9:00am – Education Hour live and streamed
10:15am – Communion Service – front parking lot
11:00am – Worship w/ Communion
1:00pm – Music Prep. & recording until 3:00pm
3:30pm – Laudate Ringers until 4:15pm
4:30pm – Youth Choir until 5:15pm
5:30pm – Beata Handbells until 6:15pm
6:30pm – Virtual Advent by Candlelight
6:30pm – Music recording until 7:30pm

Monday, December 14

8:30am – Preschool
12:15pm – Preschool
7:00pm - MOPS

Tuesday, December 15

8:30am – Preschool
9:30am – Organist Practice
12:15pm – Preschool
7:00pm – 4H Club

Wednesday, December 16

7:00am – Men's Bible Study
8:30am – Preschool
9:30am – Organist practice
12:15pm – Preschool
6:30pm – Service of Lessons & Carols

Thursday, December 17

8:30am – Preschool
9:30am – Women's Bible Study via Zoom
12:15pm – Preschool
7:00pm – Women's Bible Study

Friday, December 18

Preschool Closed through January 5, 2021

Saturday, Dec. 19

8:30am – Altar Guild Prep until 9:30am

Sunday, Dec. 20

8:00am – Worship w/ Comm. & live streamed
9:00am – Educ. Hour in person & Live Streamed
10:15am – Communion Service – front parking lot
11:00am – Worship w/ Communion
1:00pm – Music Prep & recording until 3:00pm
3:30pm – Laudate Ringers until 4:15pm
4:30pm – Youth Choir until 5:15pm
5:30pm – Beata Handbells until 6:15pm
6:30pm – Music Recording until 7:30pm
7:00pm – Church Council

Birthdays:

Dec. 13	Trenton Wielage
Dec. 14	Judd Claussen
Dec. 15	Rev. Richard Pingel, Sheila Huseman, Paul Stapf, Christopher Chapa
Dec. 16	Melanie Smith, Christi West, Noah Denker
Dec. 17	Kevin Brumley, Evan Herrs
Dec. 18	Jeanne Sumstine, George Ledgerwood, Anita Mariani, Alaina Booth Kellan Mahnken, Lillian Flores
Dec. 19	Cooper Olson

Anniversaries:

Dec. 17	Richard & Becky Hainje
---------	------------------------

Our Worship 12/6/20

Attendance	315
Offerings	\$37,834.35
Sunday School	\$80.65
Trusting Hearts	\$11,180.00
<i>Offerings do not include any Electronic Contributions.</i>	

Stewardship Corner

What a truly awesome night that was in Bethlehem more than 2,000 years ago when Jesus was born! In the Gospel story, we read about the shepherds who are in their fields when they see a bright light that comes from the sky. Then they see a form, and they're scared! The angel speaks calming words: *"Fear not, for behold, I bring you good news of great joy..."* (Luke 2:10) and he tells them about the Baby in Bethlehem. Then the sky is filled with *"a multitude of the heavenly host"* (Verse 13) who join the angel in praising God. We are like those shepherds. We've had this message revealed to us, too, not by an angel, but by the Word of God. Unlike the shepherds, we know the rest of the story. We know that the Baby grew up to be a Man Who chose to be the sacrifice for our sins so that we could be justified in God's sight. As the shepherds shared the Good News, we are to as well.

Like the shepherds who traveled to Bethlehem in response to the Good News the angels brought, we have the greatest message to share.



"The shepherds returned, glorifying and praising God for all they had heard and seen, as it had been told them" (Luke 2:20).