

13145 S. Blackbob Road • Olathe, KS 66062 • 913-780-6023 • www.bslcks.org

Connecting people to Jesus as we gather, grow, and go.

Dear Friends in Christ,

The Board of Elders and pastors have spent much time trying to navigate the ever changing issues surrounding COVID-19. It is our earnest desire, as we have any in-person worship, education, or fellowship events, to keep our members healthy, to minimize risk to our members, and to continue to be able to meet in person for these various in-person events.

Due to **health department mandates for our preschool** and the continuation of the **Governor's Executive order (20-52)** requiring face-masks and other coverings while in public regardless of social distancing, the Board of Elders (with support from the pastors) voted on and approved the **requirement that face masks or other face coverings must be worn during any event inside BSLC.**

Additionally, please note that due to health department regulations and daily cleaning schedules, the preschool classrooms and nursery/MDO room are off limits to all church functions/uses.

There are a few exceptions to the mask requirement:

- Pastors and Vicar are not required to wear a mask while teaching as long as they maintain a minimum of 6-foot distance from participants. (Masks will be worn by Pastors and Vicar while not teaching);
- Persons age five years and under should not wear a face covering because of the risk of suffocation;
- Persons with a medical condition, mental health condition, or disability that prevents wearing a face covering--this includes persons with a medical condition for whom wearing a face-covering could obstruct breathing;
- Persons who are deaf or hard of hearing or communicating with a person who is deaf or hard of hearing, where the ability to see the mouth is essential for communication.



In His Service,
Board of Elders and Pastors

**FACE MASK
REQUIRED**

ARISH ANNOUNCEMENTS

TRUSTING HEARTS UPDATE

Goal - \$2.2 Million

Committed – \$2.03 Million

Received - **\$996,877.17.**

If you need additional Trusting Hearts (blue) offering envelopes, they are available in the acrylic holders by the mailboxes.



WORSHIP RESOURCES

Lectionary Images for Aug. 16

https://www.bslcks.org/wp-content/uploads/2020/08/Aug-16_Lectionary-Images.pdf

Children's worship Notes: August 2

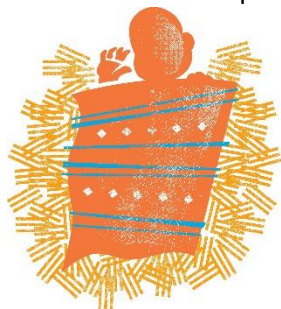
https://www.bslcks.org/wp-content/uploads/2020/08/Aug-9_Children-Worship-Notes_Matthew14_31.pdf

SUNDAY SCHOOL In today's Sunday School lesson, "Jesus Rebukes the Storm," children will learn how Jesus is the true God who stilled the storm. Families could discuss, How does Jesus continue to do the works of God in our lives?

WOMEN'S MINISTRIES

LWML ZOOM MEETING We will meet virtually via Zoom on Monday evening, August 17 at 6:30 p.m. to plan for the next few months. If you have questions about how to use Zoom, please contact Eden Keefe.

FLEECE BLANKET MISSION PROJECT Do you miss serving in the community? Do you or your student(s) want community service hours? Would you be interested in a simple project to do at home? There are sixteen (16) fleece blanket kits that can be checked out by individuals or families starting Sunday, August 9. Each kit contains washed fleece fabric and directions to make one "no-sew" fleece tie blanket.



You will need scissors, masking tape, and willing hands. You are asked to sign up on the Sign Up Genius sent via email on Tuesday, August 4. Remember the kit number you sign up for and pick up that numbered bag. You are welcome to sign up for multiple kits. Bags will be available in the narthex after the 8 am church service, outside during drive through communion, and back inside the narthex prior to the 11 am service on August 9. They will continue to be available inside on August 16, and August 23. If you have fleece fabric and wish to make a blanket from, that, instructions are also included

<https://www.bslcks.org/wp-content/uploads/2020/08/Fleece-Blanket-Instructions.pdf>. If you have questions, please contact Alison Willey from the directory. Completed blankets should be returned - in the numbered bag or with your name - to church no later than August 30. They will be distributed to MLM for distribution to the homeless they serve. Thank you for being part of mission outreach through the LWML and mission committee at Beautiful Savior!

SECRET PRAYER SISTERS If you missed the deadline for Secret Prayer Sisters, but are now interested in participating, please email Alaina Booth (alainajbooth@gmail.com)

and let her know by August 17. Then, if there's enough interest, she will do another set of pairings so more can participate!

MISSION GRANT FOCUS Donations for the LWML Mission Grants selected this summer have been at about 60% of giving from past years. We know this is due largely from being unable to receive donations at group meetings and events (like convention), **but it does not reflect the giving hearts of our congregations.** We at Beautiful Savior will strive to be more visible and make donating more convenient. The LWML Kansas District has set up **secure** online giving through Vanco, using the **Give Plus app** that you can download to your phone as an option. Cash and checks are accepted in the LWML Mite Box if you come to church on Sunday mornings. You can also send a check to LWML Treasurer Karen Benz. Thank you for considering ways to support our mission grant

projects! All are selected with a Gospel aspect, in addition to filling specific mission needs.

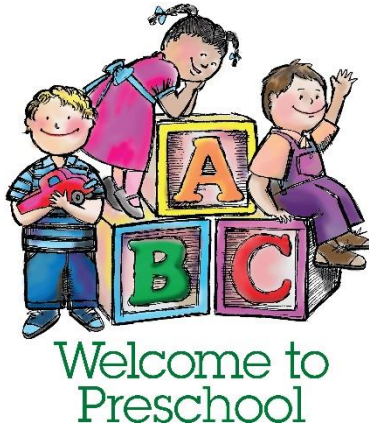
PRESCHOOL NEWS

*Connecting children and families to Jesus
as we gather, grow, and go.*

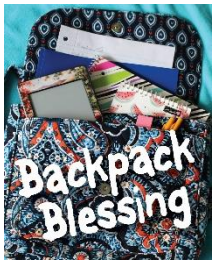
BEAUTIFUL SAVIOR LUTHERAN PRESCHOOL

officially begins the 2020-2021 school year on Monday, August 17th. It was a busy week of orientation over Zoom, school supply drop-offs, and visits for some of our new families. We've got a wonderful staff, many children, and supportive preschool families excited for another year of Growing in Jesus. There are a few openings available if you know of anyone looking for a preschool home. Thank you for your prayers for a safe and healthy school year!

Serving with JOY in Jesus,
Amy Schultz
Preschool Director



MISSIONS



BACKSNACK PROGRAM DONATIONS

–We have been asked to continue providing all the items for the bags throughout the summer months. If you would like to help please consider one of the following; donating food items, helping pack /

deliver bags and providing monetary support to help pay for the food. If you would like to help please contact Pastor Ada (pastorada@bslcks.org) for more details. If you would like to make a monetary donation you can make a check out to Beautiful Savior Lutheran Church, and indicate on the check: Pioneer Trail BackSnack Program.

BLESSINGS ABOUND Thanks for your support of Blessings Abound! In accordance with the KS mandate, please wear a mask or face shield. We can't wait to see

you at BA, whether donating, shopping, or volunteering. If you need a mask, let us know. BA is open 10-6 M-F, 10-4, Sat. Donations are accepted 10-4 M-F, 10-3 Sat. www.blessingsaboundkc.org.

COMMUNITY EVENTS

PEN PAL PROGRAM The last couple of months have been very challenging for residents and Villa St Francis staff. There is a lot of emptiness without the blessings volunteers bring into the building. While we don't know when care homes will once again open up to the public, we would like to start a Pen-Pal program for volunteers to correspond with a Villa St Francis resident. Reply to Amanda Meyers if interested, providing your name and updated address to: Amada Meyers, Village St. Francis, 1660 West 126th St. Olathe, KS 66062; email to: info@villasf.org or call by phone to 829-5201.

CHRIST LUTHERAN SCHOOL is now Enrolling! Christ Lutheran School plans to resume in-person classes on Wednesday August 19th. Any families interested in a classical Christian education are encouraged to reach out to the school office and schedule a tour! Christ Lutheran has proactively modified its campus to promote a safe learning environment and welcome students back into our classrooms. If you have questions about our program, please don't hesitate to reach out to the School Principal David Rindt at david.rindt@clcop.org. or via phone at 913.754.5891.

SCHOOL BUS DRIVERS NEEDED DS Bus lines are hiring bus drivers for the coming school year in the Olathe School District. Starting wage is \$18.75 per hour. More information can be found in the Info Rack in the narthex. Apply on line at www.dsbuslines.com or visit us in person at 18950 W. 157th Terrace, Olathe, KS., PH 913-361-7400. *Between June 22 and August 10 they will offer a \$2,500. bonus for route bus drivers.*

NOW HIRING! Bethany Lutheran School in Overland Park is currently hiring before and after school care workers, as well as classroom aides. Experience with kids ages 5-12 is preferred. Great Christian environment, good pay, and no evening or weekend hours! Contact Sharon Fries (sfries@bethanyschool.net) if you are interested.

CALENDAR:

Sunday, Aug. 16

8:00am – M-Z Worship w/ Comm. & live streamed
9:00am – Education Hour live and streamed
10:15am – Communion Service – front parking lot
11:00am – Worship w/ Comm. All welcome
7:00pm – Church Council

Monday, August 17 *First Day of Preschool*

8:30am – Preschool
12:15pm – Preschool
6:30pm – LWML

Tuesday, August 18

8:30am – Preschool
9:30am – Organist Practice
12:15pm – Preschool
1:00pm – Staff Meeting

Wednesday, August 19

8:30am – Preschool
7:00am – Men's Bible Study
9:30am – Organist practice
12:15pm – Preschool

Thursday, August 20

8:30am – Preschool
12:15am – Preschool
7:00pm – Women's Bible Study

Friday, August 21

8:30am – Preschool
12:15am – Preschool

Saturday, Aug. 22

8:30am – Altar Guild Prep until 9:30am
9:30am – First Communion Class until noon

Sunday, August 23

8:00am – A-L Worship w/ Comm. & live streamed
9:00am – Educ. Hour in person or Live Streamed
10:15am – Communion Service – front parking lot
11:00am – Worship w/ Communion (all welcome)
12:00pm – Basic Bible Training – 3rd Grade
12:00pm – Catechism Training

Birthdays:

Aug. 17 Regina Deke, Anna Hiller
Aug. 18 Ellie Doherty
Aug. 19 Dee Ann Norem. Lisa Bahr
Aug. 20 Carolyn Adkins, Georgia Freese,
Courtney Bohnert, Alexis Schima
Aug. 11 Sally Downard, Sara Zarnstorff,
Ryan Kanoy

Anniversaries:

Aug. 16 Kurt & Dee Ann Norem

Our Worship 8-9-20

Attendance.(8/2/20).....	316
Attendance 8/9/20	352

Offerings	\$16,677.25
Trusting Hearts	\$10,443.00

Offerings do not include any Electronic Contributions.

STEWARDSHIP CORNER

God has given us the privilege and the responsibility to be His stewards. As His stewards, we are to protect and expand what God entrusts to us. The word steward is rarely used in our society. Other words or terms can be used to describe our roles as stewards, but they do not carry the richness as the word steward. The word "caretaker" fails to capture the relationship laid on the steward. "Manager" doesn't convey the relationship between us and God. The word "agent" seems too business-oriented and too self-serving. "Custodian" is too passive a term. "Ambassador" is used primarily as a political term. Our God Who made heaven and earth has given us the honor to be His stewards, and He equips us to be faithful in that role.

THE GOSPEL MOTIVATES THE CHRISTIAN STEWARD. THE LAW INSTRUCTS THE CHRISTIAN STEWARD.

"And whatever you do, in word or deed, do everything in the name of the Lord Jesus, giving thanks to God the Father through Him" (Colossians 3:17).

