

13145 S. Blackbob Road • Olathe, KS 66062 • 913-780-6023 • www.bsicks.org

Connecting people to Jesus as we gather, grow, and go.

PARISH ANNOUNCEMENTS

VBS SIGN-UP



VBS sign-up is now open and will be held on June 9th – 12th from 9am-12pm.

- There is a separate sign-up for 3- and 4-year-olds and **space is limited**. Scan the QR code or click on the link below:



[3 and 4 year old sign-up](#)

- There is another sign-up for 5-year-old through 5th grade. Scan the QR code or click on the link below:



[5 year old through 5th grade sign-up](#)

- Volunteers can sign up on either link.

Questions? Please contact
Liesl Jensen or Moriah Obermueller.

HVAC CONGREGATION UPDATE #18

Completed Week of April 7th:

- We completed the review and signed off on the sound panel layout for the east, west, and north enclosure walls. Panels are now in production with a 4-week lead time.

- We are currently verifying the south wall sound panel layout so they can be released into production. We hope to finalize the layout early next week.
- The landscaping contractor decided to lay sod since weather conditions and sod availability was favorable and due to delays in receiving trees and plants. He will begin to install trees and plants in 7-10 days to allow sod to take root.

Completed Week of April 14th:

- The landscaping contractor worked on rock edging and mulch areas.
- An online meeting was held with Acoustiblok to finalize the south wall panel layout. All issues were resolved and looking for a drawing sign off on Monday.

Work Scheduled for week of April 21st:

- The landscaping contractor will start to plant the required bushes and trees.
- A meeting is planned with KD Christian to determine the estimated cost of installing sound panels.

If you have any questions, please contact
Kurt Batten or Pastor Schultz.

LAWN CARE TEAM



**Join the Trustee's
Lawn care team**

Mow from
April till October
1 to 2 times a month

Contact Trustee
Roger Berardi
to sign up!

SUNDAY SCHOOL

"The Rescuing Queen" is the title for this week's lesson. Displeased with Queen Vashti's behavior, King Ahasuerus banishes her and seeks a new queen. Esther pleases the king, who chooses her out of all the eligible women of the kingdom. Esther's guardian, Mordecai, uncovers a plot against the Jews spearheaded by Haman, one of the king's officials. Risking her life, Esther reveals the plot to the king; this saves the Jewish people and brings Haman to justice.

WORSHIP RESOURCES

Lectionary Images for April 27th

<https://www.bslcks.org/wp-content/uploads/2025/04/2025.04.27-Lectionary-Images.pdf>

My Worship Notes for April 27th

<https://www.bslcks.org/wp-content/uploads/2025/04/2025.04.27-My-Worship-Notes.pdf>

YOUTH MINISTRY

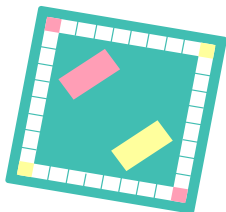
SAVERS FUNDRISE

There is still time to bring your donations for our Savers FunDrive to support the youth! Donations can be dropped off by the signs in the narthex or the fellowship hall entrance from the west parking lot on any Sunday morning or Wednesday evening during the month of April. Youth will move donated items to the youth room for you. The last Sunday to bring donations will be May 4th. Thank you for supporting our youth!

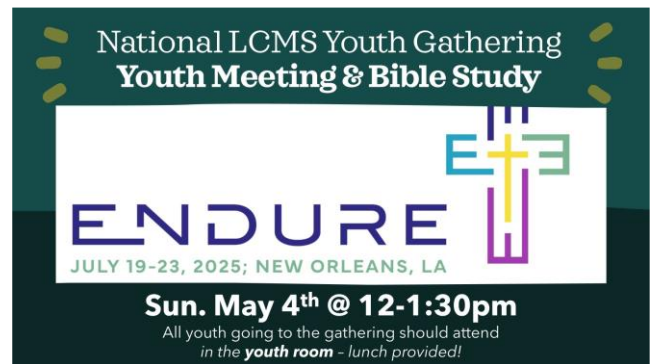


FUN 'N GAMES NIGHT

Pre-Teen & Junior Youth are invited to a Fun 'n Games night to celebrate the end of pre-confirmation and confirmation class for this school year. Please join us on April 30th during your regular class time to wrap up the year with some fun activities!



LCMS YOUTH GATHERING MEETING



WOMEN'S MINISTRY

LWML LYDIA CIRCLE APRIL MEETING

LWML Lydia Circle will meet on Monday, April 28 at 1pm in the conference room outside the Narthex. Join us for devotion, service and fellowship. If you have any questions, please contact Pam Wellons or Deb Hodnik.

THANK YOU

The women's ministries at BSLC thank you for your support when buying an Easter shirt. We raised \$222 for the women's retreat next year!

FAITH ALIVE

Faith Alive will **not** meet in May. With so many graduation and family celebrations coming up, our May gathering will be canceled. We will plan to meet on June 14, at 4:30 pm, in the large Fellowship Hall. Watch for more information when the time gets closer.

FIELDSTONE

BACKSNACK PROGRAM

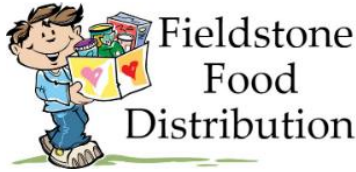
THANK YOU for all the donations throughout the school year for Pioneer Trail Middle School's Backsnack program. They have let us know that they are well supplied for the rest of this school year. We will team up with them at the start of the new school year. Pioneer Trail has been very appreciative of our donations. Thank you again for blessing these students with your donations!



FIELDSTONE

MAY FIELDSTONE FOOD DISTRIBUTION

Beautiful Savior is in partnership with Mission Southside to distribute food to families at Fieldstone Apartments here in Olathe. We meet every Friday at 3pm at Mission Southside 514 S. Kansas Ave. in Olathe to box groceries and then drive to Fieldstone



Apartments where we deliver them to our families at their apartments. We are usually done by 4:30pm. If you would like to be part of this important ministry, please click on the link below to sign up. Thank You!

[Congregation: Fieldstone Food Distribution \(signupgenius.com\)](https://docs.google.com/forms/d/e/1FAIpQLSegSsCi4CK5PHEqNq1yReCscb7uyUmlQhEycHGfVxkTFzKVXQ/viewform)

PRESCHOOL

THIS WEEK

This week in Preschool we continued to celebrate the Easter story with Mrs. Schultz's rolling flannel board Bible story time, chapel, and our Easter songs. Our



classes were able to set their butterflies free after watching the life cycle unfold these past few weeks. We had beautiful weather for playground time and our children are enjoying the springtime themes of insects, flowers,

and our upcoming Mother's Day. We are so thankful for our little ones and their families as we look ahead to our last three weeks of school this year!

KC AREA NEWS

SAVE THE DATE

Two Lines Pregnancy Clinic is holding a Walk for Life – a walk that brings hope and changes lives on Saturday, May 31st at 8:30am. Participants can expect a 2-mile walk, rain or shine, entertainment, food, games, and prizes, etc. Registration is now open. Click on the link below for more information and to register:

www.unexpectedlovekc.com



THE LUTHERAN HIGH SCHOOL OF KC

ELEMENTARY/MIDDLE SCHOOL SUMMER CAMPS

Who is ready for summer? We are excited to share information about our upcoming elementary/middle school summer camps. Please turn to the end of the Info As You Go for the full flyer. Below is the registration link:

<https://docs.google.com/forms/d/e/1FAIpQLSegSsCi4CK5PHEqNq1yReCscb7uyUmlQhEycHGfVxkTFzKVXQ/viewform>

HOST FAMILIES

"The Lutheran High School of Kansas City is seeking families to host an international student for the 2025-2026 school year. This is an incredibly rewarding experience to share hospitality while



ensuring that students have access to Christian education. We are now partnering with American Home Life International (AHLI), who will oversee the hosting experience with 24/7 support and a monthly stipend. Host Families will apply on their website to host a LHS International Student. Please email Tamara Smith at tsmith@lhskc.com for more information."

KC AREA LUTHERAN CHURCHES AND SCHOOLS

JOB OPPORTUNITY: CHRISTIAN TEACHER

Hope Lutheran School in Shawnee, KS, seeks a dedicated and enthusiastic full-time Kindergarten and middle school math Christian Teacher for the 2025-2026 school year. We are looking for someone who:

- Is a practicing, professing Christian actively involved in their congregation.
- Creates a fun and energetic classroom environment that promotes student growth and fosters a love for God, learning, and community.
- Collaborates with colleagues to uphold and enhance academic excellence within a caring Christian school setting.
- Teaches in a self-contained elementary classroom.
- Actively participates in the spiritual life of both the school and the church.
- Commits to obtaining a Kansas teaching license within the first year of placement.

Benefits:

We offer a comprehensive benefits package, including health insurance, disability coverage, and retirement plans.

How to Apply:

If you feel called to join our mission and community, please send your cover letter and resume to Mrs.

Nancy Jankowski, Principal, at

jankowski@hopelutheran.org.

PRESCHOOL DIRECTOR POSITION OPEN

Redeemer Lutheran Church, Olathe, KS seeks a dynamic, self-starter to lead our Preschool. This is an excellent opportunity to provide children a quality, nurturing environment on which to build a successful education, to share the love of Jesus with them to learn about God and His kingdom and open endless opportunities for learning. To learn more about the position, please go to this link:

<https://tinyurl.com/e8zcx5s>

You can also access the Job Description with this QR code: To apply, please send a cover letter and resume to office@redeemerolathe.org by May 1, 2025.



THIS WEEK

THIS WEEK at GLANCE



Sunday, April 27th

8:00am – Worship w/ Comm. with live stream w/Schuller Baptism

9:30am – Education Hour with live stream

10:45am – Worship w/Communion w/Rite of Confirmation

12:30pm – Music Prep and recording

Monday, April 28th

7:30am – Monday Mornings with Psalms

8:00am – Beautiful Moms in Christ

8:15am – BSLP

8:30am - BSLP Chapel and/or Music

12:15pm – BSLP

12:30pm - BSLP Chapel and/or Music

12:45pm – BSLP Movement Class

1:00pm – LWML Lydia Circle Meeting

4:00pm – Organist practice

Tuesday, April 29th

8:15am – BSLP

8:15am - BSLP Movement Class

8:30am - BSLP Chapel/and or Music

12:15pm – BSLP

6:00pm – Security & Safety Committee Mtg

6:30pm – BSLC Pickleball w/open play at 7pm

Wednesday, April 30th

6:30am – Men's Bible Study

8:15am – BSLP

8:15am - BSLP Movement Class

8:30am - BSLP Chapel and/or Music

12:15pm – BSLP

12:30pm - BSLP Chapel and/or Music

12:45pm – BSLP Movement Class

5:30pm – Family of Faith Night

6:00pm – Jubilate Chime Choir Rehearsal

6:00pm – Confirmation & Pre-Confirmation Fun Night

6:30pm – Adult Handbells Rehearsal

Thursday, May 1st

8:15am – BSLP

8:30am - BSLP Chapel/and or Music

12:15pm – BSLP

4:00pm – Organist practice

Friday, May 2nd

7:45am – Classical Conversations

8:15am – BSLP

8:15am - BSLP Movement Class

8:30am – BSLP Chapel/and or Music

10:00am – BSLP Pre-K Mother's Day Tea

12:15pm – BSLP

6:30pm – Classical Conversations End of Year

Saturday, May 3rd

8:00am – Saturday Breakfast for Men

8:30am – Altar Guild Sunday Prep

Sunday, May 4th

8:00am – Worship w/ Comm. with live stream

9:00am – Blood Pressure Sunday

9:30am – Education Hour with live stream

10:45am – Worship w/Communion

12:30pm – Music Prep and recording

2:15pm – Laudate Ringers Rehearsal

4:45pm – Beata Handbells Rehearsal



BIRTHDAYS:

- Apr 27** Karen Scott & Jeff McDonald
Apr 28 Tom Kruse & Connor Hughey
Apr 29 Madeline Travis, Brad Cornell, & McKenna Schreiner
Apr 30 Shayla McKay & Anastasia Kastner
May 1 Leonard Hanson & Makenna Wolgast
May 2 Elle Tripp & Maya Hughey
May 3 Maya Domsch & Jackson Wagner



ANNIVERSARIES:

- Apr 29** Leonard & Connie Hanson 36 years
Apr 29 Danniell & Elise Christensen 2 years
Apr 29 Doug & Jennifer Mahnken 30 years
May 1 Tait & Lynzee Jeter 15 years
May 2 Tim & Karen Hagn 38 years

STEWARDSHIP

STEWARDSHIP CORNER

For many, the word stewardship simply means financial giving. Since stewardship is everything we do to live out our commitment to Jesus Christ, giving money is only a part of it. Stewardship is our life's response to God's grace. We are enabled to be faithful stewards through Christ's presence as the Apostle Paul stated in Galatians 2:20, "*I have been crucified with Christ. It is no longer I who live, but Christ Who lives in me. And the life I now live in the*

flesh I live by faith in the Son of God, Who loved me and gave Himself for me." Because Christ lives in us, we can be faithful stewards and do things that are God-pleasing.

IF WE DO NOT PLAN WISELY, WE OFTEN FIND OURSELVES ASKING THE QUESTION, "WHERE DID THE TIME GO?"



"Look carefully then how you walk, not as unwise but as wise, making the best use of the time, because the days are evil" (Ephesians 5:15-16).

Our Worship for 04-20-25

6:30am	70
8:00am	187
9:30am	260
11:00am	102
Online	22
Total	621
Offerings	\$25,945

Offerings do not include any electronic contributions.

MEMORY VERSE

*For I know that
my Redeemer lives.*

and at the last he will stand upon the earth.
 And after my skin has been thus destroyed, yet in
 my flesh I shall see God, whom I shall see for myself,
 and my eyes shall behold, and not another.
 My heart faints within me!



JOB 19:25-27

lcms.org

