

13145 S. Black Bob Road • Olathe, KS 66062 • 913-780-6023 • www.bsllcks.org

Connecting people to Jesus as we gather, grow, and go.

PARISH ANNOUNCEMENTS

HVAC CONGREGATION UPDATE



Our progress was slightly slowed due to opposing counsel and engineer presenting an alternate plan that we had to evaluate and determine any risks with continuing to proceed with our original plans. Their proposed plan would not work without variances from the city, nor would it be viewed favorably by our neighbors. We utilized a third-party engineer to evaluate our situation to best prepare us for our pre-suit mediation. Our third-party engineer conducted a site visit on August 30th, and he said there is no doubt the opposing engineer made an error. He said the only way to fix the problem is to move all four HVAC units per our plan. He will be sending us a full report from his site visit, which will be very helpful during our mediation, which has been confirmed for September 27th.

Week of September 1st planned activities:

- The HVAC contractor is planning to start removal and reversing the lower-level ductwork in the north hallway.
- The foundation contractor will start moving equipment and material on site.
- We will hold a contractor's meeting on Wednesday September 4th to discuss schedule, deadlines, coordination between contractors, and swap contact information to keep lines of communication open.
- We will continue to ramp up project activity throughout the week.

If you have any questions, please contact Kurt Batten or Pastor Schultz.

THRIVENT ACTION TEAMS

Did you know that Thrivent members are eligible to use two Thrivent Action Teams every year?

Thrivent
Action
Teams



Thrivent Action Teams are needed for this year's Family of Faith Night meals. If you are a Thrivent member and would like to help support the cost of our meals this year, please email Amy Schultz at amy.schultz@bsllcks.org and we'll assign you a date for this fall. Thank you for helping us to feed our family of faith with food and the Word of God!

PRAYER AND CARE TEAM



"Preschool Prayer and Care Team forming now! Do you know how to email? Have you been looking for a way to serve others from your home? We are still looking for 7 more caring members who will email preschool families 2x during the school year. The purpose of this ministry is to form connections between church members and our preschool families (who are both members and nonmembers). Our goal is to pray and care for all our preschool families as part of Beautiful Savior's growing family of faith! We would be looking hto start in September. If you would like to be an emailer or would like additional information, please contact Trish Batten Trishbatten87@gmail.com or speak with Pastor Ada.

MUSIC MINISTRY

Calling all musicians! Are you interested in being involved in the music at BSLC? Choir and handbell ensembles have started up and we would love to have you join us! Please contact Luran Delancy at Luran.Delancy@gmail.com for more information about ensembles and rehearsal times or playing your instrument.

VOLUNTEERS

Michelle Wibe, Education Assistant is seeking volunteers to sign up as a **substitute** for either children's Sunday School during the Education hour on Sundays or for Family of Faith Nights on Wednesdays. Please prayerfully consider how you can help. If you are interested, contact Michelle Wibe at michelle.wibe@bsclks.org.



SUNDAY SCHOOL

Today, we will study "Signs of the True God," as student learn more about Moses and the plagues. God guides Moses to release His people from their slavery in Egypt, but Pharaoh proves less than cooperative. A series of plagues—foretold by Moses and sent by God—brings destruction and pain upon the Egyptians but only serves to harden Pharaoh's heart against Moses and the Israelites.

WORSHIP RESOURCES

Lectionary Images for September 8th

<https://www.bsclks.org/wp-content/uploads/2024/09/2024.09.08-Lectionary-Images.pdf>

My Worship Notes for September 8th

<https://www.bsclks.org/wp-content/uploads/2024/09/2024.09.08-My-Worship-Notes.pdf>

FELLOWSHIP BOARD

MISSING

Help! The kitchen is missing the two laundry baskets that we use to collect the weekly laundry. If you took them home so you could wash a load, could you please return them? We use them daily for collecting dirty towels and washcloths and they help keep our kitchen tidy.

FELLOWSHIP HOUR COFFEE

The coffee brand we have switched to is called **Three Avocados Coffee**. This company is based in Highland, Illinois, and is a Christian non-profit. The beans are grown in Uganda and 100% of their net profits go to provide clean and safe drinking water for

Uganda. We feel that this coffee is worthy of our purchase because the company pays a fair price for the beans; the company reinvests in the community in which the beans are grown; and it is delicious. But it is costly. We go through a bag about every 3 weeks. Sponsoring a bag would help offset the cost and allow us to continue to provide you with great taste, ethically sourced coffee. Would you be interested in sponsoring a package of coffee? Please talk to Pastor Schultz or Brett Stoll.



SAVE THE DATE



MISSIONS

BACKSNACK PROGRAM

The **Pioneer Trail Middle School Backsnack** program will be starting in early September for the school year. We will be providing extra food for the students to take home on the weekends. Students will be signing up for the program in August. We have been providing food for approximately 30 students each week in the past. Our food items for this year are **cereal** (regular-size, not family-size boxes), **fruit cups**, and **granola/breakfast bars**. Preferably, fruit cups instead of applesauce cups. **We will NOT be providing pudding cups this year.**



Donations may be put in the large wooden box in the narthex. This is an on-going project for the 2024-2025 school year. Please help support these students. Any questions, contact Charlotte Hundley or Karen Kuhn.

WOMEN'S MINISTRY

SECRET PRAYER SISTERS

Secret Prayer Sisters is a ministry between you and another woman in the BSLC family. You become her silent prayer partner and her secret encourager September through May. You can encourage her with prayers, cards, and small gifts throughout the year. She doesn't know who you are, but she will know you are there, praying for her and thinking of her! If you would like to participate, please complete the Secret Prayer Sister Questionnaire found by the wooden collection box in the narthex or reach out to Christy McCombs to receive a questionnaire via email. Sign-ups are due by Sunday, September 8th to mailbox #181.

LWML WINGS CIRCLE MEETING (EVENING)

The next LWML WinGS Circle meeting will be on Monday, September 16th in Room 114 at 6:30pm. This will be a business meeting for the planning of LWML fall events such as LWML Sunday and Farmstead Treats. Please bring your blessings count from the past couple of months. All women of BSLC are welcome to attend. For more information, please contact Christy McCombs.



FALL KICK OFF FOR LYDIA'S CIRCLE LWML

Mark your calendars for Monday, September 23rd at 1:30pm in room 114. Let's start the Fall off with a FUN meeting of Fellowship, Devotion, and Service Projects. If you are new to LWML, come check it out! Kim Burdett will be explaining the basics. We will be discussing plans for the Fall as well as a quick craft. Blessing Counts is another activity we will be participating in as well as a fun ice breaker.

FAITH ALIVE (55+ GROUP)

SEPTEMBER MEETING

Faith Alive (55+ group) is planning to get together Sat., September 21, at 4:30p.m. in Room 114. We will start with a devotion and shared discussion. We will also do a Mission project of assembling school supplies in tote bags for Orphan Grain Train. Come



Faith Alive Group 55+

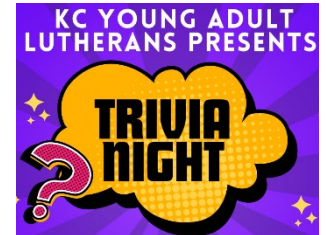
join us for an evening of fun, fellowship and food! A reminder with more details will be sent out to those on our email list. If

you haven't been before and would like to join us, please contact Randy/Jeanne Kanoy, Brad/Eden Keefe or Charlotte Hundley. We'd love to see you!

YOUNG ADULTS

KC YOUNG ADULT LUTHERANS TRIVIA NIGHT!

Get ready for an evening of fun and friendly competition at our **Trivia Night!** Join us for a chance to test your knowledge and connect with fellow young adults in our Lutheran community.



Date: Monday, September 23

Time: 6:30 PM – 9:30 PM

Location: Brew Lab, Overland Park, KS (7925 Marty St, Overland Park, KS 66204)

Highlights:

- **Top Team Prize:** The team with the highest score will take home a special prize!
- **Raffle Drawing:** Enter for a chance to win an exciting raffle prize!

RSVP: Please let us know if you plan to attend by September 18! [RSVP HERE](#). Don't miss out on this opportunity for a great time with great people. We can't wait to see you there!

YOUTH BOARD

AX THROWING



Parents of all youth are invited to an ax throwing event to celebrate sending their kids back to school! We will meet at Blade & Timber in Town Center (5203 W. 117th Street, Leawood) on September 15th from 12:40-2:15 for a parent only event. Cost is \$35 per person and covers ax throwing games (food and drinks are on your own). Please complete the registration form (sent to you via email) and return it to Pastor Ada by Wed. August 28th to reserve your spot!

GAME DAY

Pre-teen and Junior Youth are invited to a "game day" on Sunday, September 22nd in the fellowship hall following the late service from 12pm – 2pm. We will have lunch and play a variety of games together. Come and get to know the new group of 5th - 8th grade youth members!



PARENT INFORMATION MEETING

Parents of 8th-12th grade youth are invited to an informational meeting to discuss plans for the upcoming LCMS Youth Gathering this summer in New Orleans. Please join us at 6:00 on Wednesday, Oct. 2nd, in the SW preschool room for information about this event. *(The Faithfully Parenting Teens class will meet after the Youth Gathering meeting is over!)*



KS DISTRICT CONFIRMATION RETREAT



THE LORD'S PRAYER

Registration is open for the annual KS District Fall Confirmation Retreat for all Preteen and Junior Youth (5th -8th graders). This year's theme is *The Lord's Prayer*. The retreat will be held at Rock Springs 4H Ranch in Junction City, KS

(1168 Hwy K157) on October 4th-5th. The cost for BSLC youth is \$40. Turn in your registration form and payment to Pastor Ada by Sep. 11th to ensure a T-shirt for your youth. In addition, if you can drive or chaperone this event, please let Pastor Ada know ASAP!



KC LUTHERAN HIGH SCHOOL YOUTH SCAVENGER HUNT

On Saturday, October 26th from 1-3pm at the Legends, the high school youth from area LCMS churches will meet for a scavenger hunt. Please contact Pastor Ada to sign up, for more details, and if you have any questions.

5TH-8TH GRADE

YOUTH EVENTS

Save the Dates!!

2024-2025

- SEP 22 & JAN 19** **GAME DAYS**
Preteen & Junior Youth
Lunch & games in the fellowship hall 12-2
- OCT 4-5** **LCMS KS DISTRICT CONFIRMATION RETREAT**
Preteen & Junior Youth
Rock Springs 4H Ranch
1168 Hwy K157, Junction City, KS 66441
- DEC 8** **CHRISTMAS CAROLING**
Preteen & Junior & Senior Youth
Lunch at church & caroling at members' homes
- NOV 9 & JAN 4 & MAR 1** **FUN 'N FAITH**
Junior Youth (7th-8th only!)
1-5pm in the fellowship hall
Part of confirmation instruction!

AND BE ON THE LOOKOUT FOR THESE UPCOMING SPRING & SUMMER EVENTS!

- STUMP THE VICAR** (May: Preteen Youth)
- PROGRESSIVE DINNER** (May: 8th graders)
- LVR** (June: 8th graders)
- WORLDS OF FUN** (Summer: All Youth)

FIELDSTONE

SEPTEMBER FIELDSTONE FOOD DISTRIBUTION



Fieldstone Food Distribution

Beautiful Savior is in partnership with Mission Southside to distribute food to families at Fieldstone Apartments

here in Olathe. We meet every Friday at 3pm at Mission Southside 514 S. Kansas Ave. in Olathe to box groceries and then drive to Fieldstone Apartments where we deliver them to our families at their apartments. We are usually done by 4:30pm. If you would like to be part of this important ministry, please click on the link below to sign up. Thank You!

[Congregation: FIELDSTONE FOOD DISTRIBUTION \(signupgenius.com\)](https://signupgenius.com)

PRESCHOOL

THIS WEEK

Preschool and MDO children had a short week following our Labor Day and Olathe School District scheduled days off school. The Preschool Team is starting a training this Friday entitled, "Making the Most of Classroom Interactions." We'll be training once a month through April with staff from The Family Conservancy. We're so excited to continue to grow our skills of working with the children entrusted to our care. This training is a transformational way of seeing all interactions with children as opportunities for learning. We're looking forward to this chance to continue our professional growth for the benefit of our students!



further threaten the blood supply. Tropical storms and hurricanes that cause widespread power outages, travel hazards and flooding can result in blood drive cancellations and lower donor turnout, threatening an already low blood supply.

For additional information, please see the flier on page 8 of the Info As You Go.

CIRCLE OF HOPE

Did you know there is a cancer support group at Beautiful Savior? We are called Circle of Hope. We share weekly emails with prayer requests and meet monthly on the first Monday of the month. We would love to support and walk alongside anyone with newly diagnosed cancer especially. Please contact Char Ludwig or Denise Jordan for questions or more info.

HEALTH MINISTRY

BLOOD DRIVE SEPTEMBER 8TH

The American Red Cross is facing an emergency blood shortage and urges people to make an appointment to give now to help patients across the country receive lifesaving medical treatments. Please donate **this Sunday from 10:30 AM to 2:30 PM**. To secure your favorite timeslot click on the link below and type: BeautifulSaviorKC to schedule your appointment.



<https://www.redcrossblood.org/give.html/find-drive>

Some important statistics to note:

- Heat has impacted about 100 blood drives in July in nearly every state where the Red Cross collects blood – compounding other traditional seasonal obstacles to blood donation, such as travel and summer activities.
- Together these factors have contributed to a **shortfall of more than 19,000 blood donations in July** at a time when distributions to hospitals have remained strong and the blood supply still has not recovered from significant donation shortfalls earlier this summer.
- As we reach peak hurricane season in the Atlantic this month, tropical weather may

SERVICE OF HEALTH AND HEALING



Service of Health and Healing

Service of Health and Healing is **Monday, September 9th at 6:30 pm**. Please join us for a service of prayers, hymns, and scripture to pray for healing and celebration of health, and for those at Rest in

the Lord. This service is for **all members and guests**. Please add names for prayers in the attendance form so all can be included. If you have any questions, please contact Char Ludwig.

GRIEF SHARE CLASS

Grief share is coming to Beautiful Savior! This is a 13-week class and support group for anyone experiencing grief over losing a family member. The class will be led by Jere Brandt and Lois Clendening. There is a participant workbook for you to work through and keep. Look for more details coming soon in the Info as you Go. Questions? See Jere or Lois.



AREA LCMS EVENTS

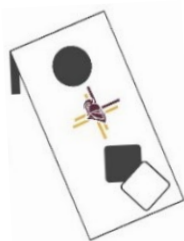
LUTHERANS FOR LIFE REGIONAL CONFERENCE

Lutherans For Life invites you to join fellow life-minded Lutherans celebrating life and equipping ourselves on life issues during the LFL Regional Conference Midwest at *Hope Lutheran Church in Shawnee, Kansas, on Saturday, October 12, 2024*. This one-day in-person conference features four national life-affirming, Gospel-motivated speakers, as well as fellowship, lunch, and a service opportunity. Limited childcare is available. Come and learn how the Lord calls us to follow Him and be "Life in the Darkness." Details and registration at <https://lutheransforlife.org/conferences/>



LHS CORNHOLE TOURNAMENT

Get your teams of 2 together for the Lutheran High School of KansasCity Cornhole Tournament Fundraiser, sponsored by the Florida Ecology Class! Happening Sunday September 8th beginning at 3 PM at LHS on the soccer field (if it rains, the event will be held in the LHS gym)! Register by calling the school office or by filling out this google form- click [here](#). (cost is \$30 per team) The top 3 teams will win prizes (amount depends on number of entries) ★ Double Elimination ★ Food & drinks for purchase ★ Raffle tickets available ★ All skills & ages welcome ★ Bring your own bags or use ours ★ Want to be a sponsor? Contact: Mrs. Hizer at jhizer@lhskc.com.



JOB OPPORTUNITY

Lutheran High School of Kansas City is looking for an assistant for our amazing Lunch Lady. This individual would be responsible for helping prepare food and serve lunch. No experience necessary, just a willingness to serve others and help as directed by our lunch lead. Hours will be from 9:00 AM - 11:00 AM Tuesdays, Wednesdays, and Thursdays. It will be an hourly paid position. Please contact Tamara Smith at tsmith@lhskc.com if interested.



THIS WEEK

Sunday, September 8th

- 8:00am – Worship w/ Comm. with live stream/First Communion
- 9:30am – Education Hour with live stream
- 10:30am - BSLC Blood Drive
- 10:45am – Worship w/Communion/First Communion
- 12:30pm – Music Prep and recording
- 2:15pm – Laudate Ringers Rehearsal
- 3:00pm – Intermezzo Ringers Rehearsal
- 4:00pm – Youth Choir Rehearsals
- 4:45pm – Beata Handbells Rehearsal

Monday, September 9th

- 7:30am – Monday Mornings with Psalms
- 8:00am – Beautiful Moms in Christ
- 8:15am – BSLP
- 8:30am – BSLP Chapel/and or Music
- 12:15pm – BSLP
- 12:30pm - BSLP Chapel/and or Music
- 12:45pm – BSLP Movement Class
- 4:00pm – Organist practice
- 6:30pm – Service of Health and Healing

Tuesday, September 10th

- 8:15am – BSLP
- 8:15am - BSLP Movement Class
- 8:30am - BSLP Chapel/and or Music
- 12:15pm – BSLP
- 6:30pm – Pickleball set up/Open play starts at 7:00pm

Wednesday, September 11th

- 6:30am – Men's Bible Study
- 8:15am – BSLP
- 8:15am - BSLP Movement Class
- 8:30am - BSLP Chapel and/or Music
- 10:00am – Lifelight Bible Study
- 12:15pm – BSLP
- 12:30pm - BSLP Chapel and/or Music
- 12:45pm – BSLP Movement Class
- 5:30pm – Family of Faith Night
- 6:00pm – Jubilate Chime Choir Rehearsal
- 6:00pm – Pre-Confirmation and Confirmation
- 6:30pm – Adult Handbells Rehearsal
- 7:30pm – Adult Choir Rehearsal

Thursday, September 12th

- 8:15am – BSLP
- 8:30am – BSLP Chapel and/or Music

12:15pm – BSLP
 4:00pm – Organist practice
 6:00pm – Lifelight Bible Study

Friday, September 13th

7:45am – Classical Conversations (N Olathe)
 8:15am – BSLP
 8:15am - BSLP Movement Class
 8:30am – BSLP Chapel and/or Music
 11:30am – BSLP Staff Meeting
 12:15pm - BSLP

Saturday, September 14th

8:30am – Altar Guild Sunday Prep
 8:30am – Young Adult Women’s Brunch

Sunday, September 15th

8:00am – Worship w/ Comm. with live stream
 9:30am – Education Hour with live stream
 10:45am – Worship w/Communion
 12:30pm – Music Prep and recording
 2:15pm – Laudate Ringers Rehearsal
 3:00pm – Intermezzo Ringers Rehearsal
 4:00pm – Youth Choir Rehearsals
 4:45pm – Beata Handbells Rehearsal

BIRTHDAYS:

- Sept 9** Jim Davis
- Sept 10** Colton Clark
- Sept 11** Lisa Gruhn, Brad Keefe, Kara Herrs, Debra Newman, & Alexius Wolff
- Sept 12** Tricia Domsch, Debbie Southard, & Nathan Delancy
- Sept 13** Andrew Nichols, Amy Oestmann, Henry Ronsick, & Peyton Ohlman
- Sept 14** Katy Torres, Rick Vaughn, & Bailey Francis



ANNIVERSARIES:

- Sept 8** Brett & Ashley Stoll 17 years
- Sept 9** Earl & Dixie Herren 63 years
- Sept 10** Aaron & Amanda Johnson 9 years

STEWARDSHIP

STEWARDSHIP CORNER

Jesus said, “Everyone to whom much was given, of him much will be required, and from him to whom they entrusted much, they will demand the more” (Luke

12:48). Jesus is saying that God expects more from those to whom He has given more. Those with large incomes and wealth are obviously able to give more than those with less. From this person to whom God has entrusted much, God asks much more. After reaching the benchmark of the tithe, those so richly financially blessed by God can, by God’s grace, set new benchmarks for their giving. With loving and faithful hearts, we give freely, cheerfully, and sacrificially.

ALL THAT WE ARE, HAVE, AND HOPE TO BE ARE GIFTS FROM GOD.



“Every good and every perfect gift is from above, coming down from the Father of lights” (James 1:17).



Our Worship for 09-01-24	
8:00am	184
10:45am	169
Online	45
Total	398
Offerings	\$17,663
Sunday School in person	
Children	45
Adults	120
Total	165
SS Offerings	\$115
SS Offerings Recipient	Operation Christmas Child

Offerings do not include any electronic contributions.

**JOIN US AT
CAMP DO GOOD.**

Give Blood.

WELCOME



Receive a
donor ticket to
Worlds of Fun!



**Blood Drive
Beautiful Savior
Lutheran Church**

In the Fellowship Hall, use lower parking lot entrance
13145 S. Black Bob Rd.
Olathe, KS 66062

**Sunday, September 8, 2024
10:30 a.m. to 2:30 p.m.**

Please call 1-800-RED CROSS (1-800-733-2767) or visit RedCrossBlood.org and enter: BeautifulSaviorKC to schedule an appointment.



Come to give blood Sept. 1 to Sept. 15 for an
EXCLUSIVE Red Cross raglan shirt, while supplies last

Be part of something big. Make an appointment.

1-800-RED CROSS | RedCrossBlood.org | Download the Blood Donor App

© 2024 The American National Red Cross | 452201-1 CW

[63] - Order ID: 181604 - Item ID: 6018078 - Qty: 1 of 1 - MS 111 - 2024-APL0115 - APSS - 34144



CORNHOLE TOURNAMENT

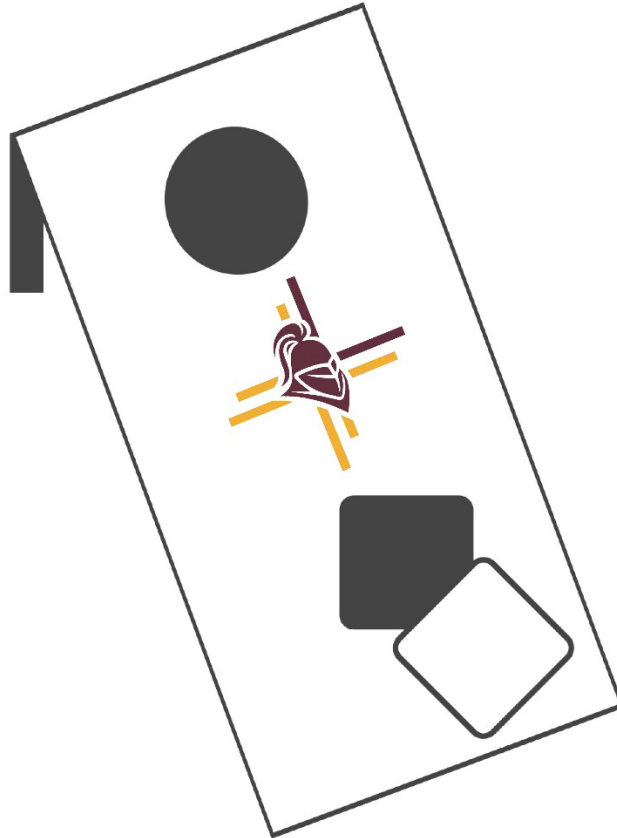
SUNDAY

8

SEPTEMBER

STARTS AT 3PM

**\$30 PER TEAM
BENEFITS THE LHS
FLORIDA ECOLOGY
WINTERIM TRIP**



-
- ★ TOP 3 TEAMS WIN PRIZES (AMOUNT DEPENDS ON HOW MANY ENTRIES)
 - ★ DOUBLE ELIMINATION
 - ★ FOOD & DRINKS FOR PURCHASE
 - ★ OPPORTUNITY TO BUY RAFFLE TICKETS
 - ★ ALL SKILLS & AGES WELCOME
 - ★ BRING YOUR OWN BAGS OR USE OURS
 - ★ REGISTER AT THE SCHOOL OFFICE: 816-241-5478 OR ON SCHOOL WEBSITE (UNDER SUPPORT- LHS CORNHOLE TOURNAMENT REGISTRATION
 - ★ EVENT HELD OUTSIDE ON SOCCER FIELD OR IF RAINING, EVENT WILL BE IN GYM
-

**THE LUTHERAN HIGH SCHOOL OF KC
12411 WORNALL RD KANSAS CITY, MO**

THE KARL BIRNSTEIN MEMORIAL GOLF TOURNAMENT

CREEKMOOR GOLF COURSE

(1112 E. 163rd Street, Raymore, MO, 64083)

MONDAY, SEPTEMBER 16TH AT 1:00 PM

\$150/Individual - \$550/Team

SPONSORSHIP LEVELS

Eagle Level

\$2500 or more (includes 4-person team package; advertisement on 2 holes and Putting Green; listed on website)

Birdie Level

\$1000 or more (includes 4-person team package; advertisement on 2 holes; listed on website)

Team Package, \$550

Individual Ticket - \$150

Clergy or Teacher Ticket - \$75

Hole Sponsorship, \$200

Dinner Only, No Golf, \$25

Super Boosters are included in every ticket level.

Includes two mulligans, one putting contest entry, and one shot on each Par 3 contest hole.

REGISTRATION

To register go to lhskc.com and click on "Support" and then "Karl Birnstein Memorial Golf tournament" or call the school office at 816-241-5478



Willkommen!



**Trinity Lutheran Church
Block, KS**

Saturday, September 21, 2024 Noon to 6:00 PM

Trinity Lutheran Church

34868 Block Road, Paola, Kansas 66071

www.trinitylcms.org

*Come celebrate with us as we focus on our Christian faith,
our German heritage, and community spirit with fun, food, and fellowship.*

HEARTLAND REVIVAL

KC AREA

On The Porch

11:00 – 12:30



Loehnig German Band

Hermann, Missouri

On Stage

1:00 – 5:00

In The Big Tent



Kids activities include rides and crafts



Brats

Concessions and full German meal served by Trinity Youth

Cash sales encouraged – Venmo service available

No outside food or drinks please

SORRY, NO PETS ALLOWED



Homemade Bierocks

Admission and parking are free with donations going
toward church ground improvements



Family Fun



Biergarten



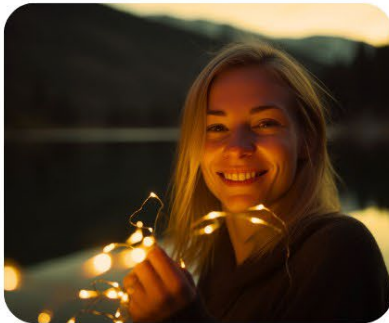
Polka Dancing



LUTHERANS
FOR LIFE

LUTHERANS FOR LIFE REGIONAL *Conference*

Hear from national life experts reaching others with the Gospel of Life, enjoy time of fellowship and service together.



LIFE SHINES IN DARKNESS

In him was life, and the life was the light of men. The light shines in the darkness, and the darkness has not overcome it.

John 1:4-5

**JOIN US FOR A
CONCERT FOR LIFE
FRI OCT 11
7PM**

Hope Lutheran Church

6308 Quivira Rd., Shawnee, Kansas

OCT | 12TH | 2024

8AM-4PM



Register today!

\$50 Registration Fee | Lunch Included

Limited Childcare Available

lutheransforlife.org/conferences

